

AZTECH LABS, INC.

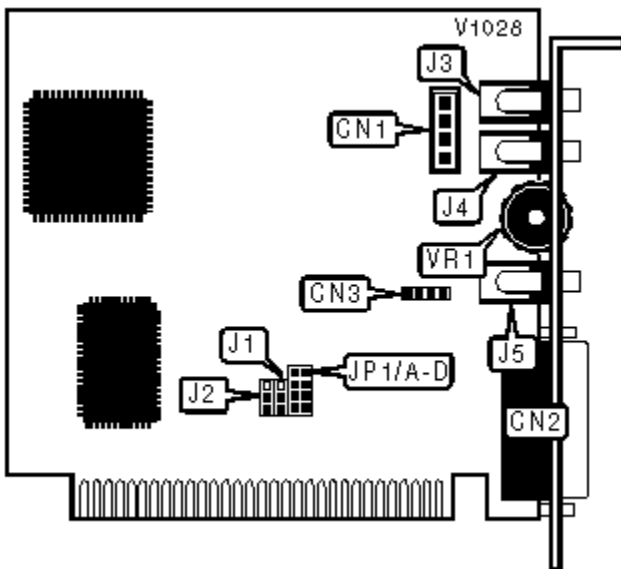
SOUND GALAXY BX II EXTRA/BX III

Card Type Sound card

Chipset Controller Aztech

I/O Options Audio out, CD audio in, game/MIDI port, line in, microphone in, speaker connector, volume

Maximum DRAM N/A



CONNECTIONS

Purpose	Location	Purpose	Location
CD audio in	CN1	Microphone in	J4
Game/MIDI port	CN2	Audio out	J5
MPC speaker connector	CN3	Volume	VR1
Line in	J3		

BASE I/O ADDRESS SELECTION

	Address	J1
»	220h	Pins 1 & 2 closed
	240h	Pins 2 & 3 closed

GAME PORT CONFIGURATION

	Setting	J2
»	Enabled	Pins 1 & 2 closed
	Disabled	Pins 2 & 3 closed

INTERRUPT SELECTION

	IRQ	JP1/A	JP1/B	JP1/C	JP1/D
»	7	Closed	Open	Open	Open
	2	Open	Open	Open	Closed
	3	Open	Open	Closed	Open
	5	Open	Closed	Open	Open

Note: » is default